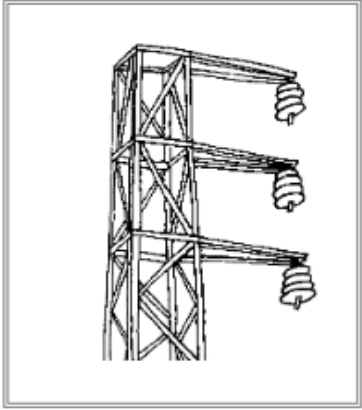
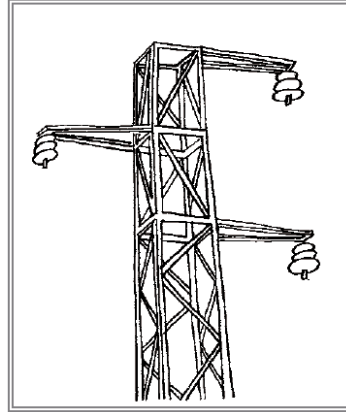


AISLADORES SUSPENDIDOS (TODOS LOS CABLES VAN SUSPENDIDOS POR DEBAJO DE LA ZONA DE POSADA)

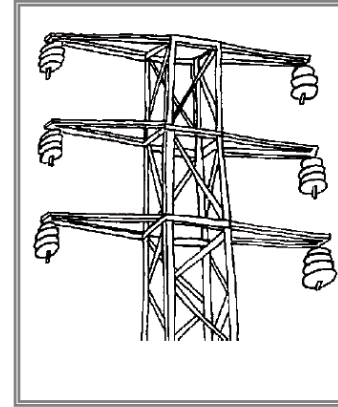
P1BANDERA/AS



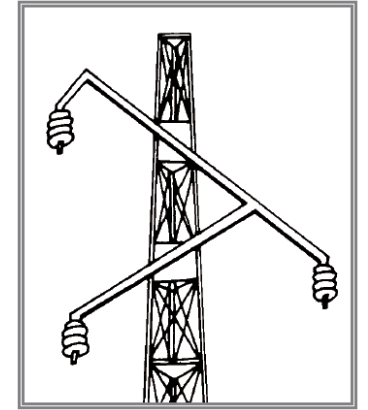
P1TRESBOLILLOSIMPLE/AS



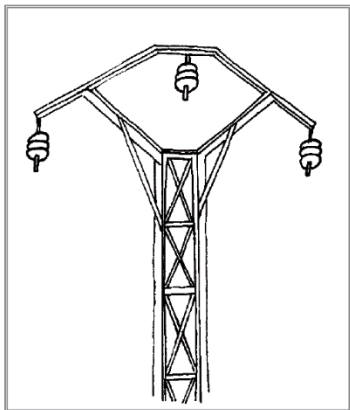
P1TRESBOLILLODOBLE/AS



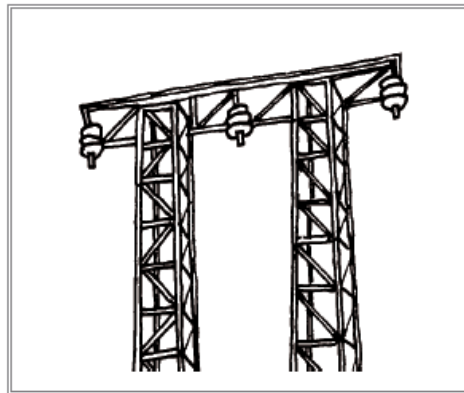
P1CANADIENSE/AS



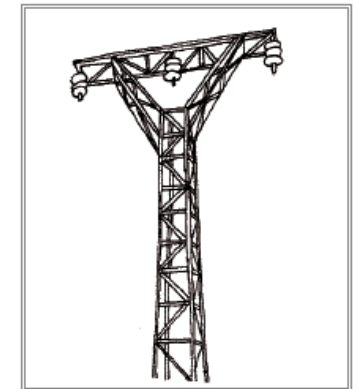
P2BOVEDA/AS



P3PORTICO/AS

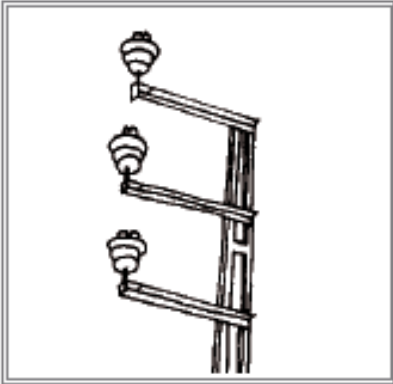


P3BOVEDACELOSIA/AS

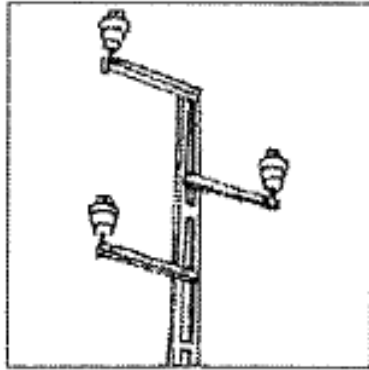


AISLADORES RÍGIDOS(MONTAJE VERTICAL TODOS LOS CABLES POR ENCIMA DE LA ZONA DE POSADA)

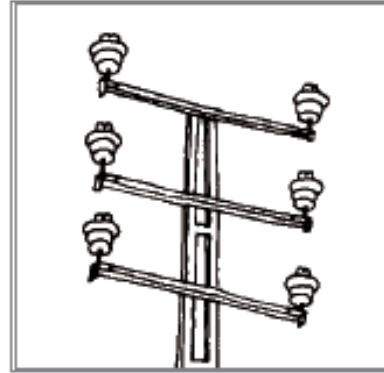
P4BANDERA/AR



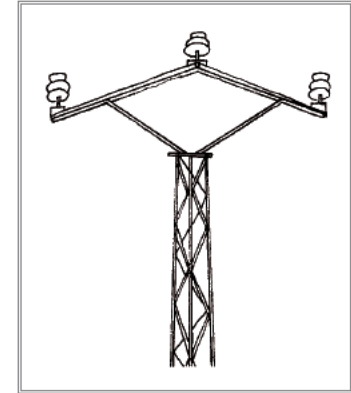
P4TRESBOLILLOSIMPLE/AR



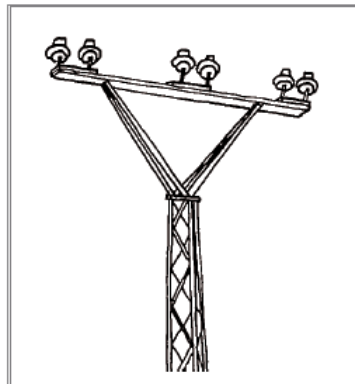
P4TRESBOLILLODOBLE/AR



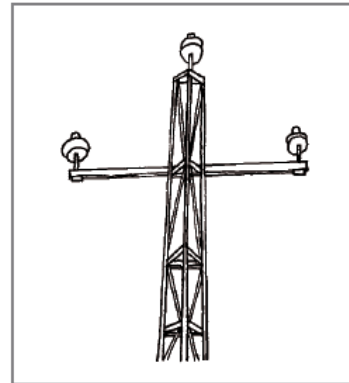
P5BOVEDA/AR



P6/AR

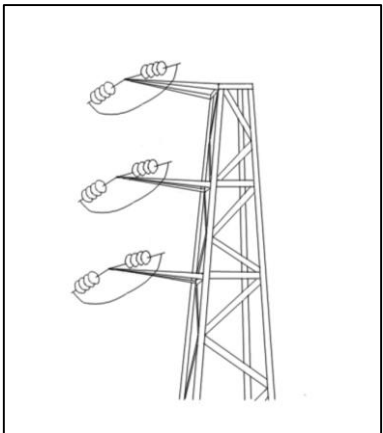


P7/AR

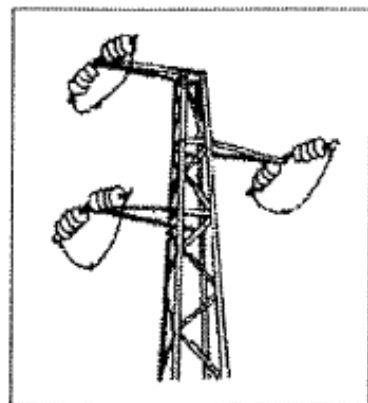


POSTES DE AMARRE CON PUENTE POR DEBAJO (AMPD) O POR ENCIMA (AMPE). (Los cables llegan a la misma altura del poste mediante cadenas de aisladores en amarre)

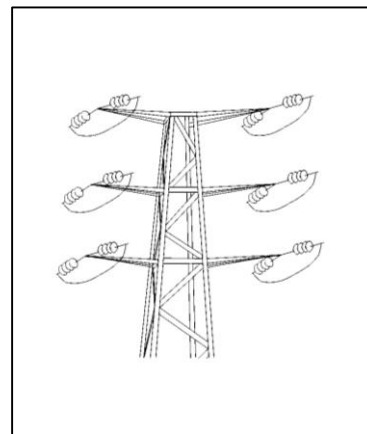
P8BANDERA/AMPD



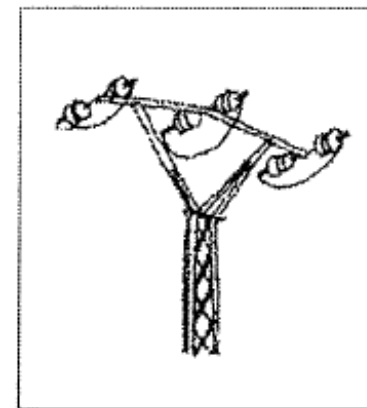
P8TRESBOLILLOSIMPLE/AMPD



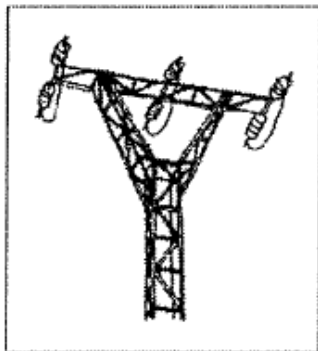
P8TRESBOLILLODOBLE/AMPD



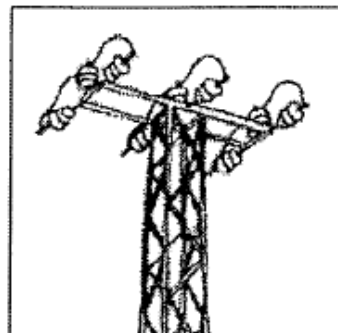
P9BOVEDA/AMPD



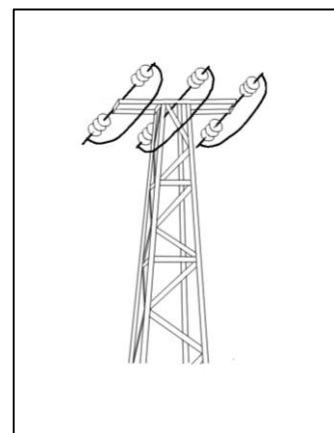
P10BOVEDACELOSIA/AMPD



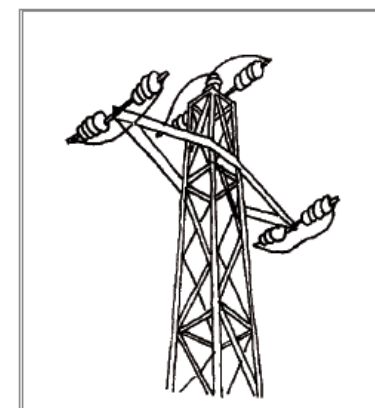
P11/AMPE



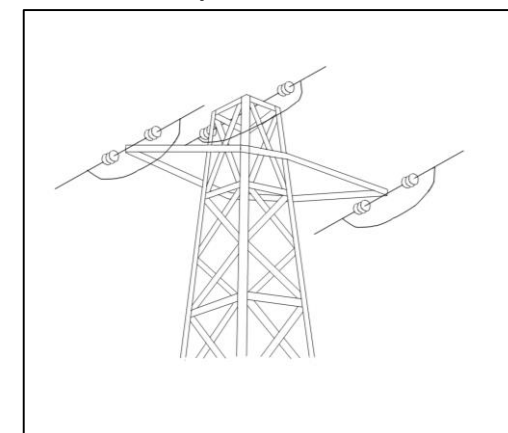
P11/AMPD



P12/AMPE

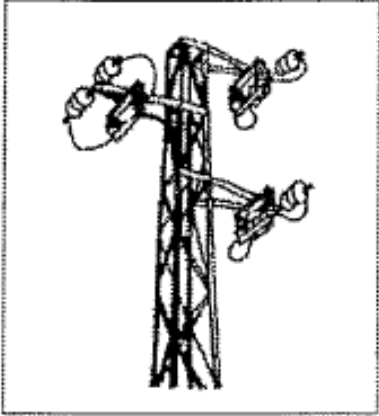


P12/AMPD

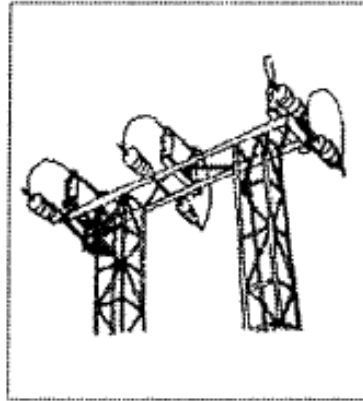


SECCIONADORES (FUSIBLES-INTERRUPTORES), DERIVACIONES Y TRANSFORMADORES.

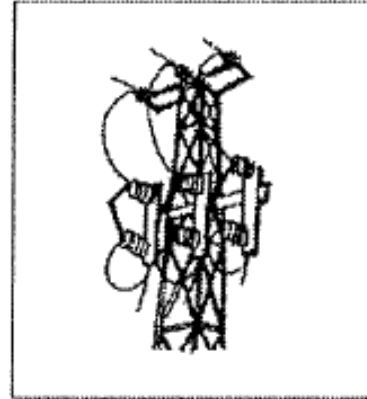
P13/SC



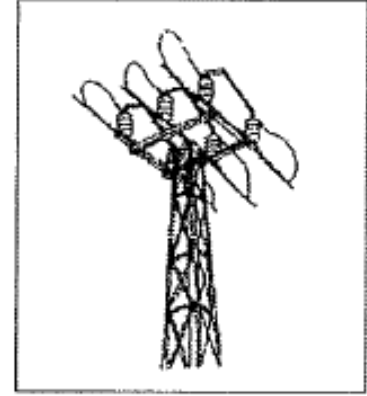
P14/SC



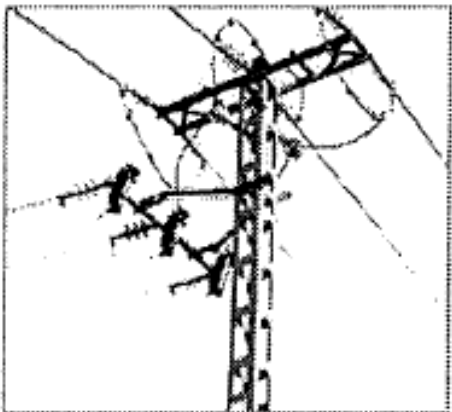
P15/SC



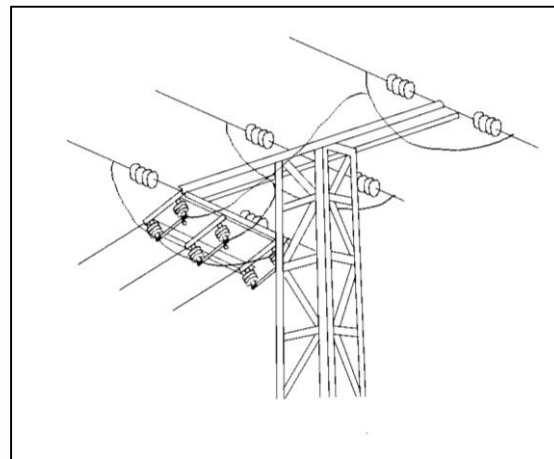
P16/SC



P17/DER



P18/DER+SC



TRANSFORMADOR

